



Academic Partnership at a Glance

MITRE and The University of Texas at San Antonio (UTSA) partnership enhances our nation's cyber security posture and responsiveness. The partnership builds upon the recognition of UTSA as one of the top cyber security academic institutions and MITRE's strategic initiative to generate new opportunities through engagement with academia and industry.

The focal point is the UTSA National Security Collaboration Center (NSCC). NSCC is a collaborative forum with government, university, industry, national laboratories, and federally funded research and development centers engagement. It will be a state-of-the-art cyber security facility.

By leveraging the UTSA NSCC, College of Engineering, College of Science, and College of Business, MITRE and UTSA are enhancing the San Antonio cyber security ecosystem. The key technical and research domains are cyber security, artificial intelligence, data analytics, and human systems integration.

“

MITRE challenged me to learn skills and technologies far beyond the scope of my academic curriculum. Being tasked with solving problems related to containerization and cloud architecture, I was necessarily required to traverse unfamiliar territory and engage in continuous self-teaching.

”

Management and Administrative Team

MITRE Team:

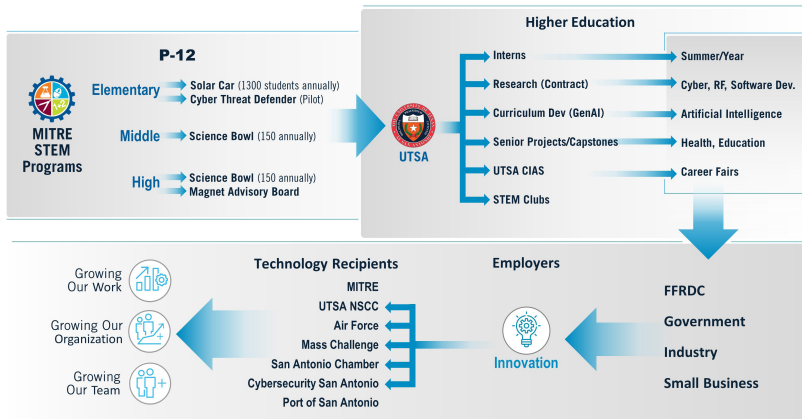
Olivia Blackmon, PhD

MITRE Outreach and Academic Engagements

Bobby Blount

MITRE San Antonio Site Leader

MITRE Impact on San Antonio Cyber Eco-System



MITRE CURRENT ENGAGEMENT IN SAN ANTONIO CYBER ECO-SYSTEM

Notable Collaboration Between MITRE and UTSA includes:

- UTSA and MITRE established a user acceptance testing framework for agile software development through the national cyber security Information Security Research and Education (INSuRE) project.
- MITRE established a prestigious and highly sought-after summer internship opportunity at MITRE for UTSA students.
- Generation AI Nexus is helping all students, regardless of their major, understand Artificial Intelligence and how to use it as an effective tool.
- MITRE adopted the UTSA Center for Infrastructure Assurance and Security (CIAS) developed Cyber Threat Defender K-12 program for a national STEM initiative.
- UTSA faculty developed a data science online boot camp to educate MITRE cyber security engineers.
- MITRE innovation and technology used to develop a corporate-wide cyber platform is being leveraged by UTSA.

GEN AI HIGHLIGHT

Geological sciences lecturer Jaime Hincapie took his Fundamentals of GIS class on an expedition to use machine learning techniques to process and analyze a data set of 6,000 earthquakes in northwestern Colombia over the past 50 years to search for earthquake clusters. With little to no experience in computer programming or statistical analysis, Hincapie's students learned how to use accessible, free AI software to process a large amount of information and ultimately understand that geological data is three dimensional.

Mission and Vision Statement:

MITRE's mission-driven teams are dedicated to solving problems for a safer world. Through our public-private partnerships and federally funded R&D centers, we work across government and in partnership with industry to tackle challenges to the safety, stability, and well-being of our nation.

MITRE is proud to be an equal opportunity employer. MITRE recruits, employs, trains, compensates, and promotes regardless of age, color, race, disability, marital status, national and ethnic origin, political affiliation, religion, sexual orientation, gender identity, veteran status, family medical or genetic information, and other protected status.

MITRE | SOLVING PROBLEMS
FOR A SAFER WORLD™

To learn more, please contact us at universityexchange@mitre.org.